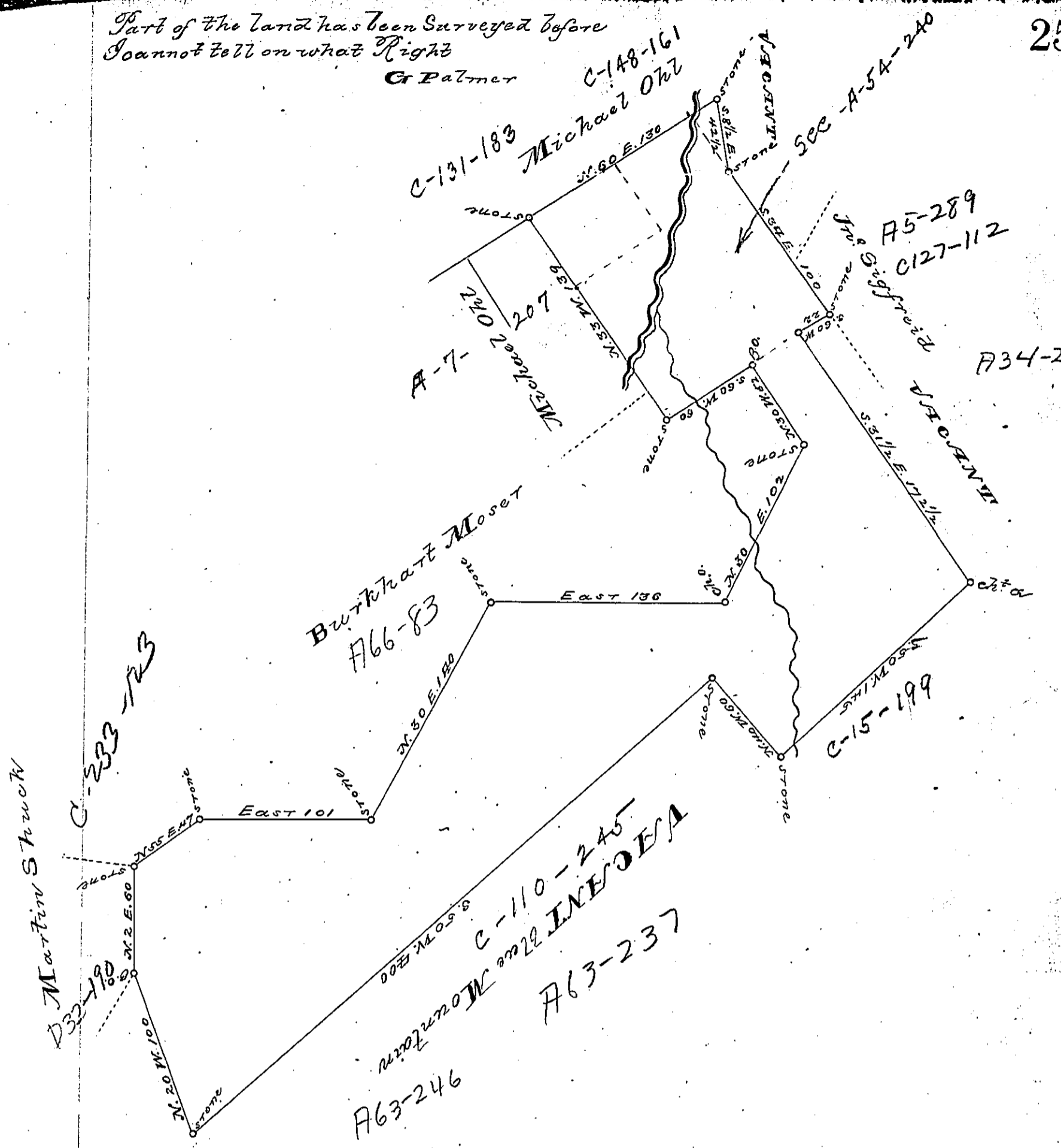
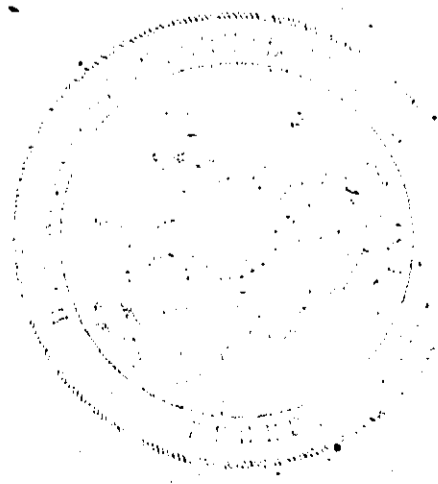


Part of the land has been surveyed before  
I cannot tell on what Right  
G Palmer



By Virtue of a Warrant dated the 16 October 1792  
 Surveyed the 25 March 1793 to Michael Ohl the  
 above described tract of land situate at the  
 foot of the Blue mountain on a branch of  
 Lizard Creek in Penn Township in the County  
 of Northampton Containing 422 Acres  
 30 perches & the allowance of Six & Cent &c<sup>a</sup>  
 To Danl. Brodhead Esq. J. G. J. G.  
 J. Geo. Palmer S. S.

IN TESTIMONY that the above is a copy of the original remaining on file in the  
 Department of Internal Affairs of Pennsylvania, made con-  
 formably to an Act of Assembly approved the 16th day of  
 February, 1833, I have hereunto set my Hand and caused  
 the Seal of said Department to be affixed at Harrisburg, this



— twentieth — day of — September — 1892.

*Thos. J. Stewart*  
 Secretary of Internal Affairs